

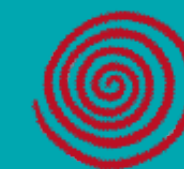
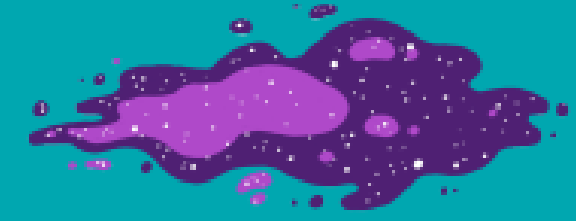
The background is a dark, deep purple space filled with various celestial elements. There are numerous white stars of different sizes and shapes, some with four-pointed flares. Several spiral galaxies are scattered throughout, including a prominent cyan one in the upper left, a purple one in the upper right, a cyan one in the lower left, and a red one in the lower right. A small red ring-like structure is visible in the upper left quadrant. The word 'PORTAL' is centered in a large, white, italicized sans-serif font. The letter 'O' is replaced by a stylized, glowing cyan portal with a dark, swirling interior and a bright, multi-colored border.

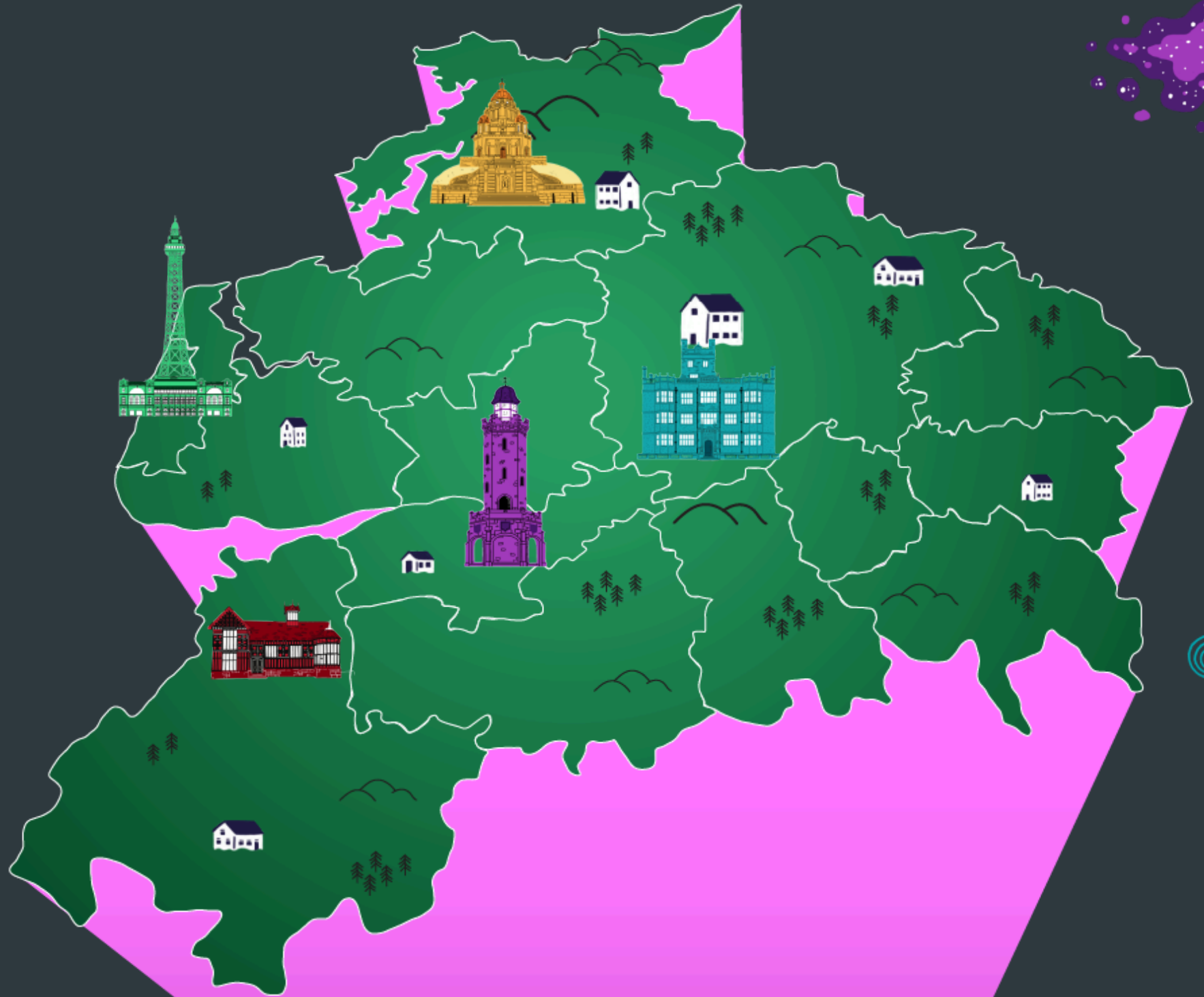
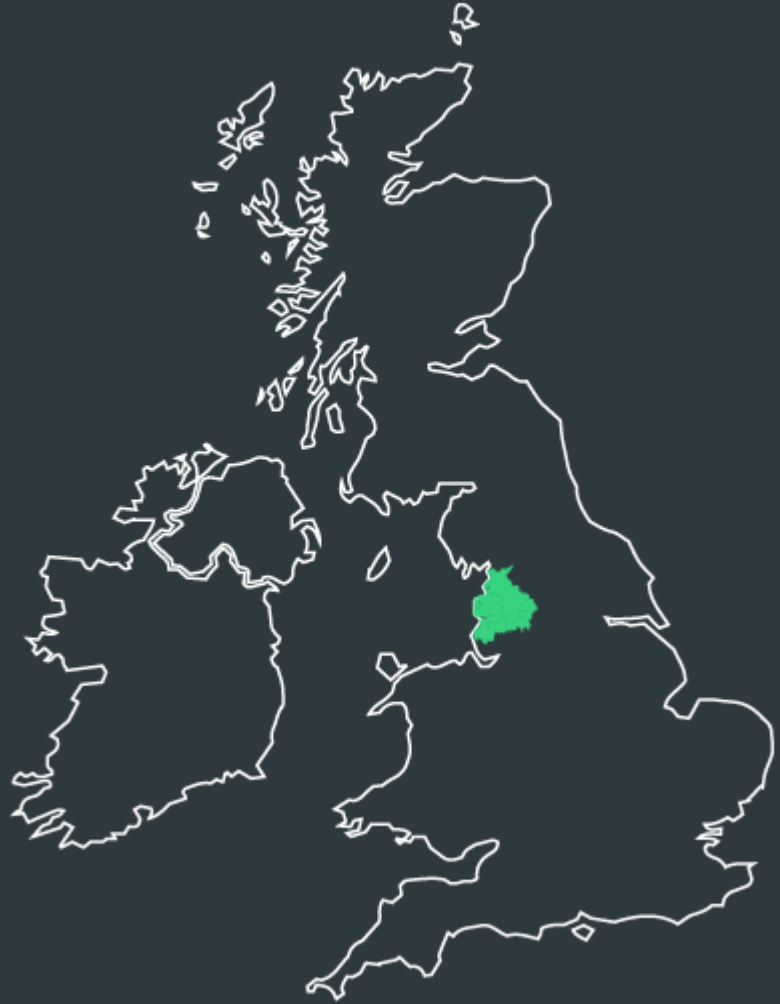
PORTAL

EXPLORE THE FUTURE OF JOBS IN BLACKPOOL, FYLDE AND WYRE

PORTAL

EXPLORE THE FUTURE OF JOBS IN BLACKPOOL, FYLDE AND WYRE

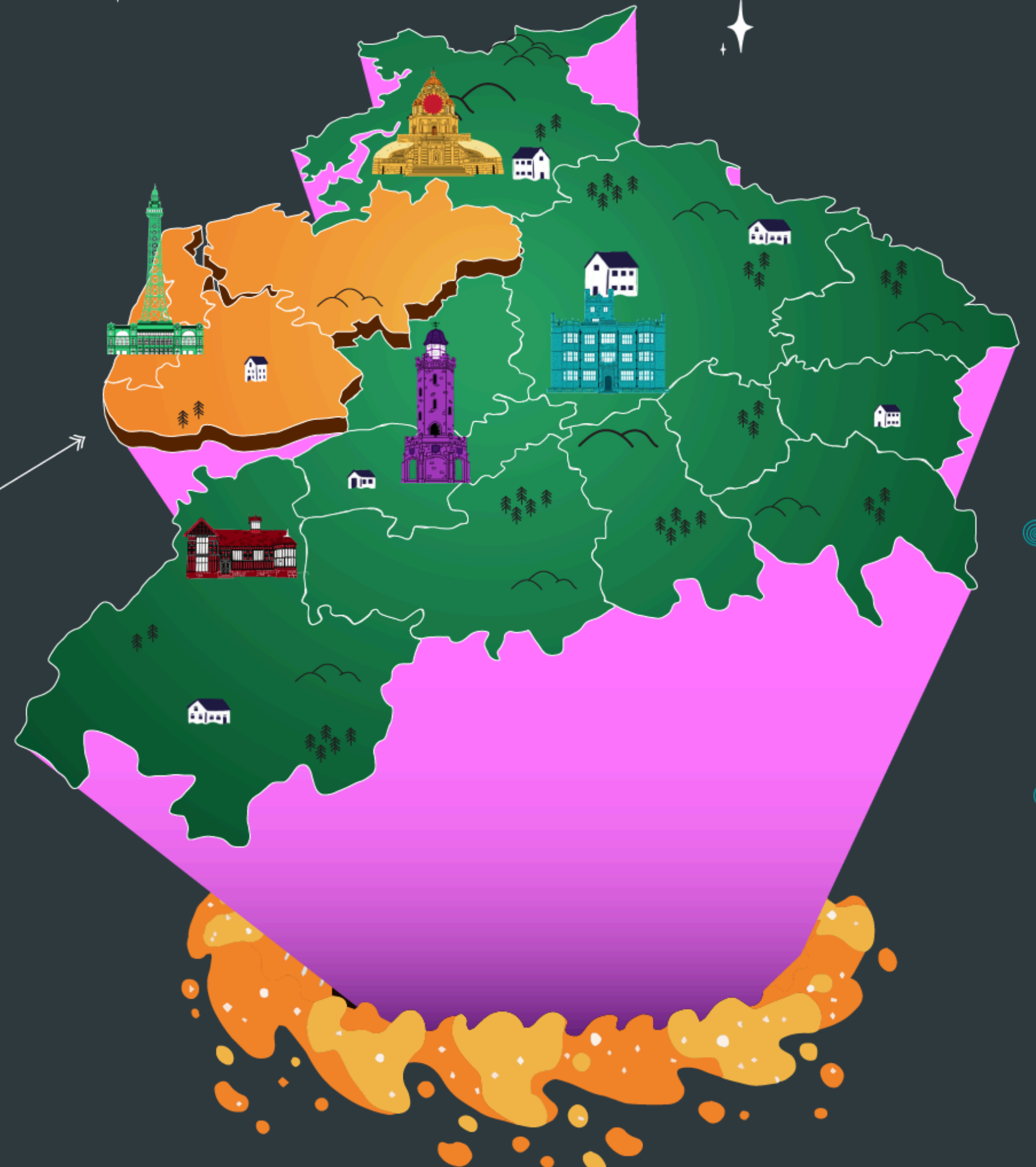




THIS IS LANCASHIRE

THIS IS YOUR TRAVEL TO WORK AREA

BLACKPOOL, FYLDE AND WYRE
CATCHY, RIGHT?



THIS IS BLACKPOOL, FYLDE AND WYRE



83%

OF PEOPLE
WHO LIVE HERE,
WORK HERE

EMPLOYERS IN LANGCASHIRE

ADVANCED MANUFACTURING

FOOD AND AGRICULTURE

CONSTRUCTION

ENERGY AND LOW CARBON

HEALTH AND SOCIAL CARE

CREATIVE AND DIGITAL

TOURISM AND CULTURE



EMPLOYERS IN YOUR AREA

BLACKPOOL, FYLDE AND WYRE

ADVANCED MANUFACTURING

FOOD AND AGRICULTURE

CONSTRUCTION

ENERGY AND LOW CARBON

HEALTH AND SOCIAL CARE

CREATIVE AND DIGITAL

TOURISM AND CULTURE

FLEETWOOD

THORNTON
CLEVELEYS

BLACKPOOL

infios
a Körber company

**PLEASURE
BEACH**
RESORT

MAC

EVOLVE | ENERGY

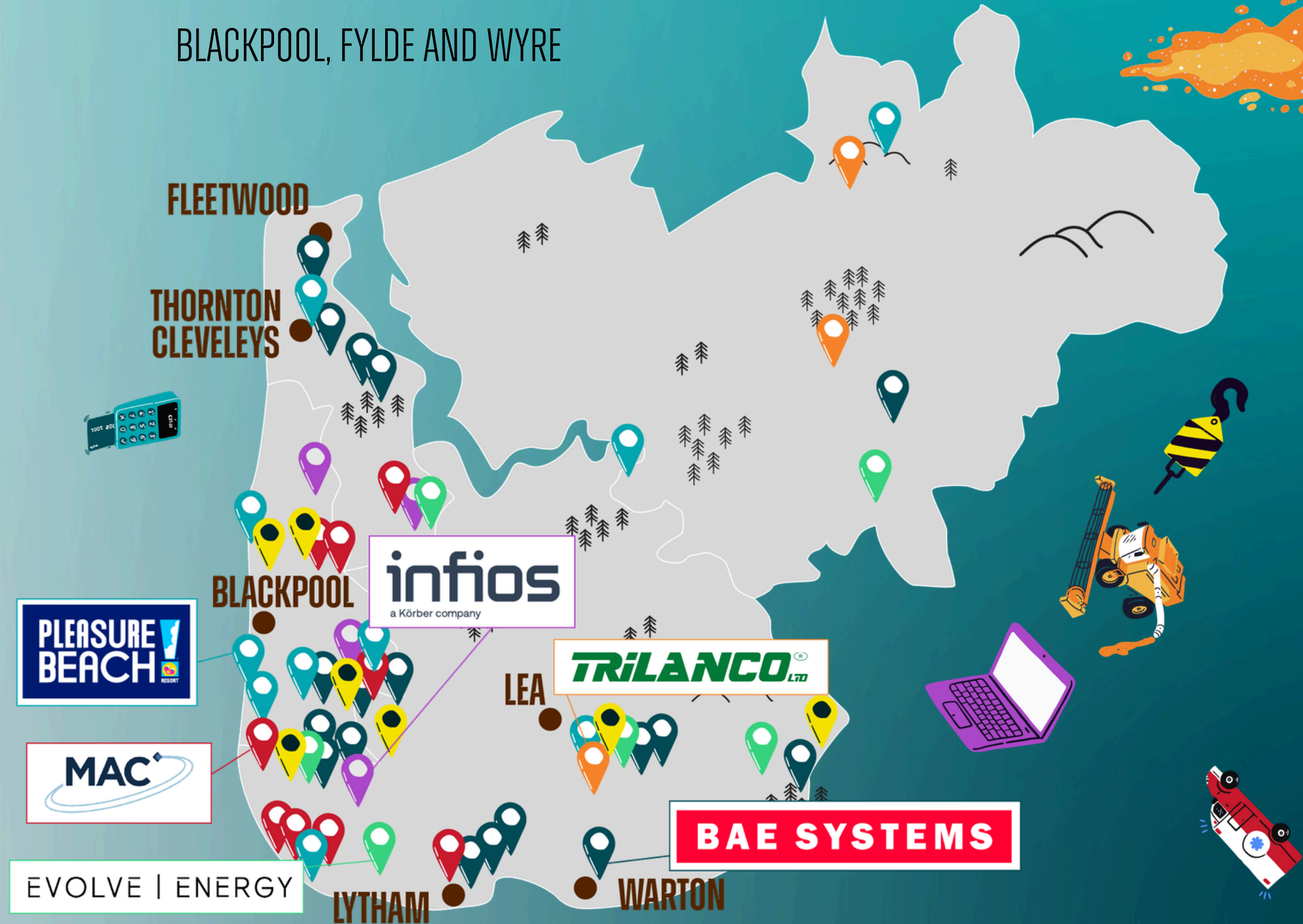
LYTHAM

LEA

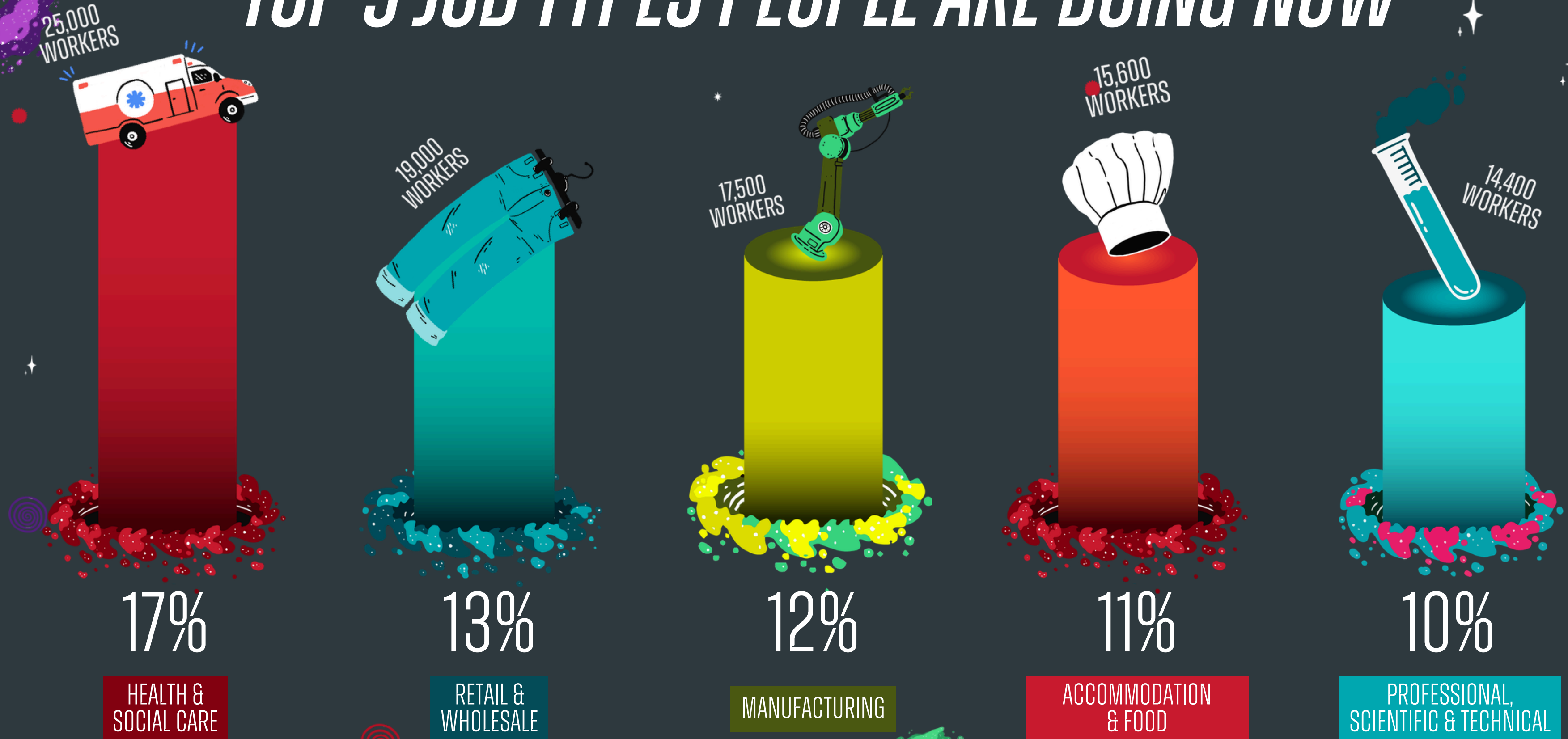
TRILANCO
LTD

BAE SYSTEMS

WARTON



TOP 5 JOB TYPES PEOPLE ARE DOING NOW



TOP 5 JOB TYPES PEOPLE WILL BE DOING IN 2034



17%

HEALTH & SOCIAL CARE



12%

RETAIL & WHOLESALE



12%

MANUFACTURING



10%

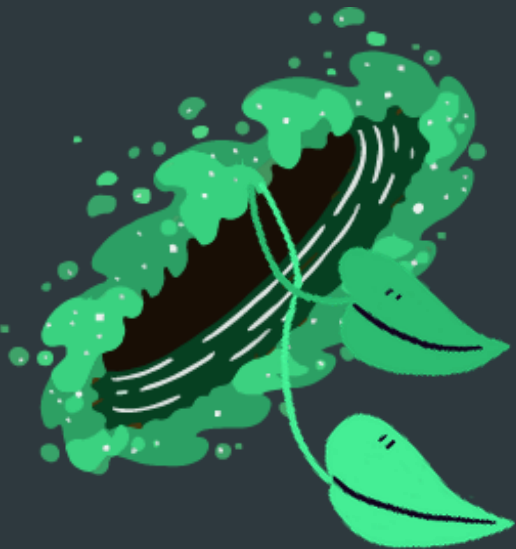
PROFESSIONAL, SCIENTIFIC & TECHNICAL



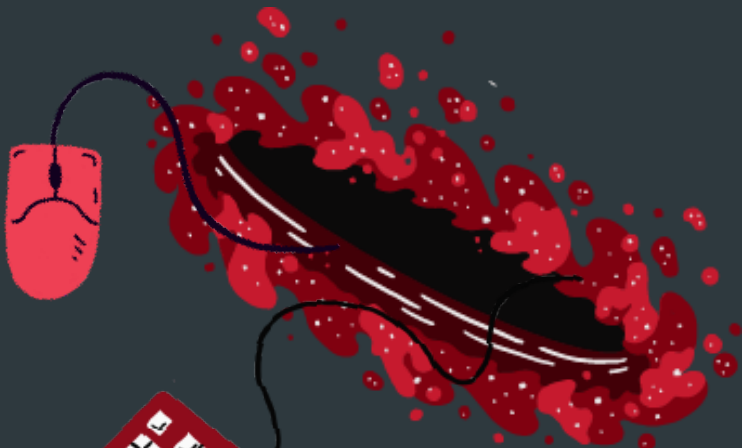
10%

ACCOMMODATION & FOOD

OTHER JOB TYPES THAT WILL BE AVAILABLE IN 2034



LOW CARBON



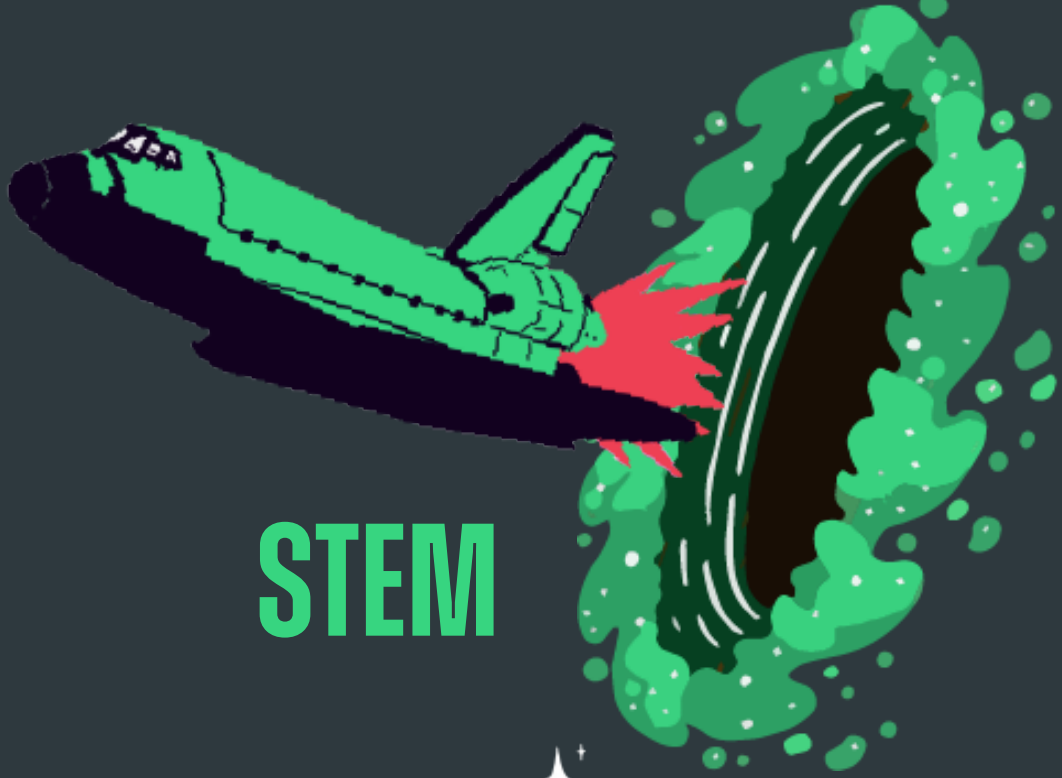
DIGITAL



TRANSPORT



FINANCE & LEGAL



STEM

JOB LANDSCAPE IN LANCASHIRE



75.2%

ARE IN EMPLOYMENT



8.3%

OF WHICH SELF EMPLOYED

JOB LANDSCAPE IN YOUR AREA



81.1%

ARE IN EMPLOYMENT



12.9%

OF WHICH SELF EMPLOYED

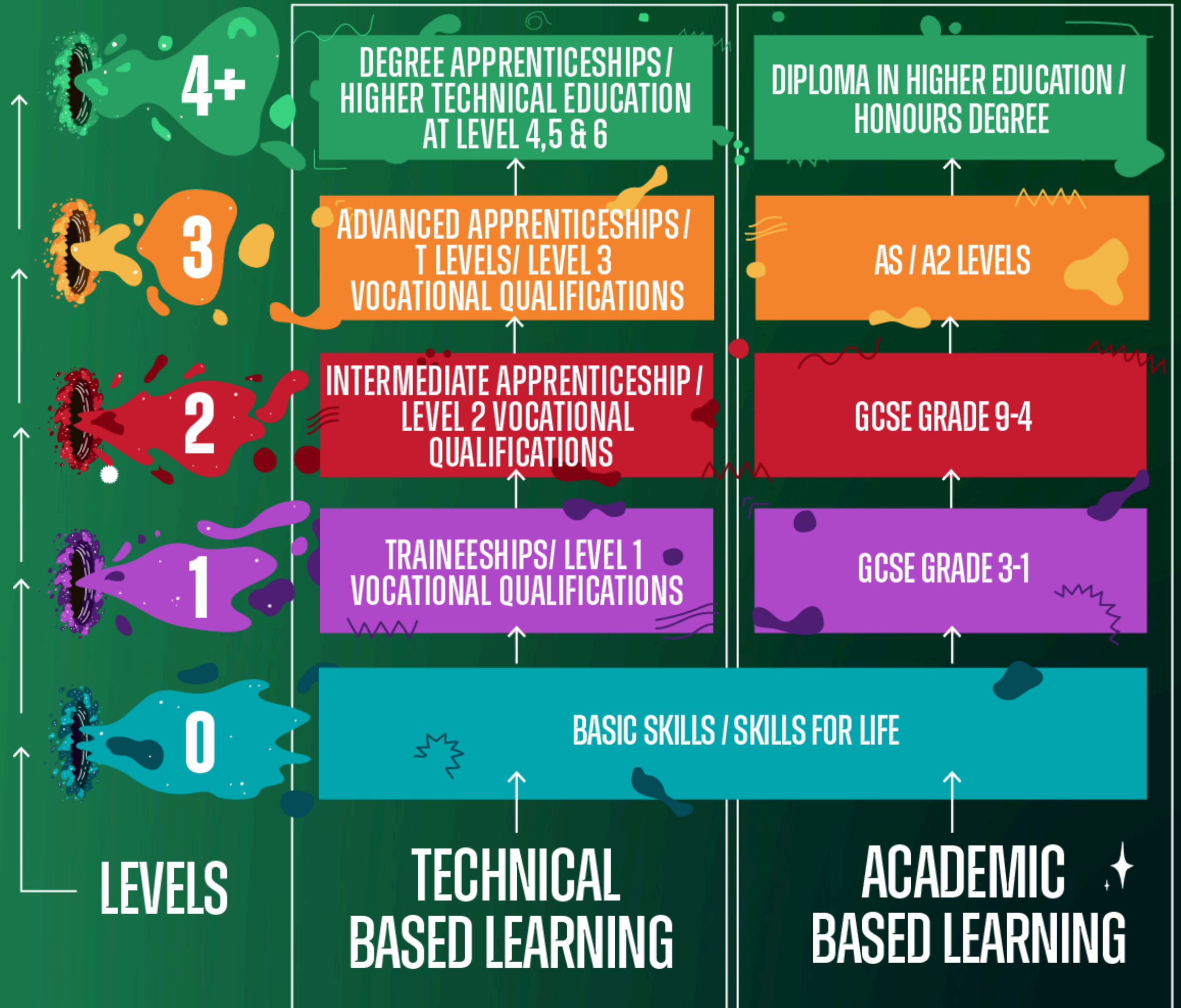


APPRENTICESHIPS

APPRENTICESHIPS ARE A GREAT WAY TO EARN AND LEARN WHILST WORKING,
AND AVAILABLE IN AN INCREDIBLY BROAD RANGE OF JOBS

WHAT DO WE MEAN BY QUALIFICATION LEVELS?

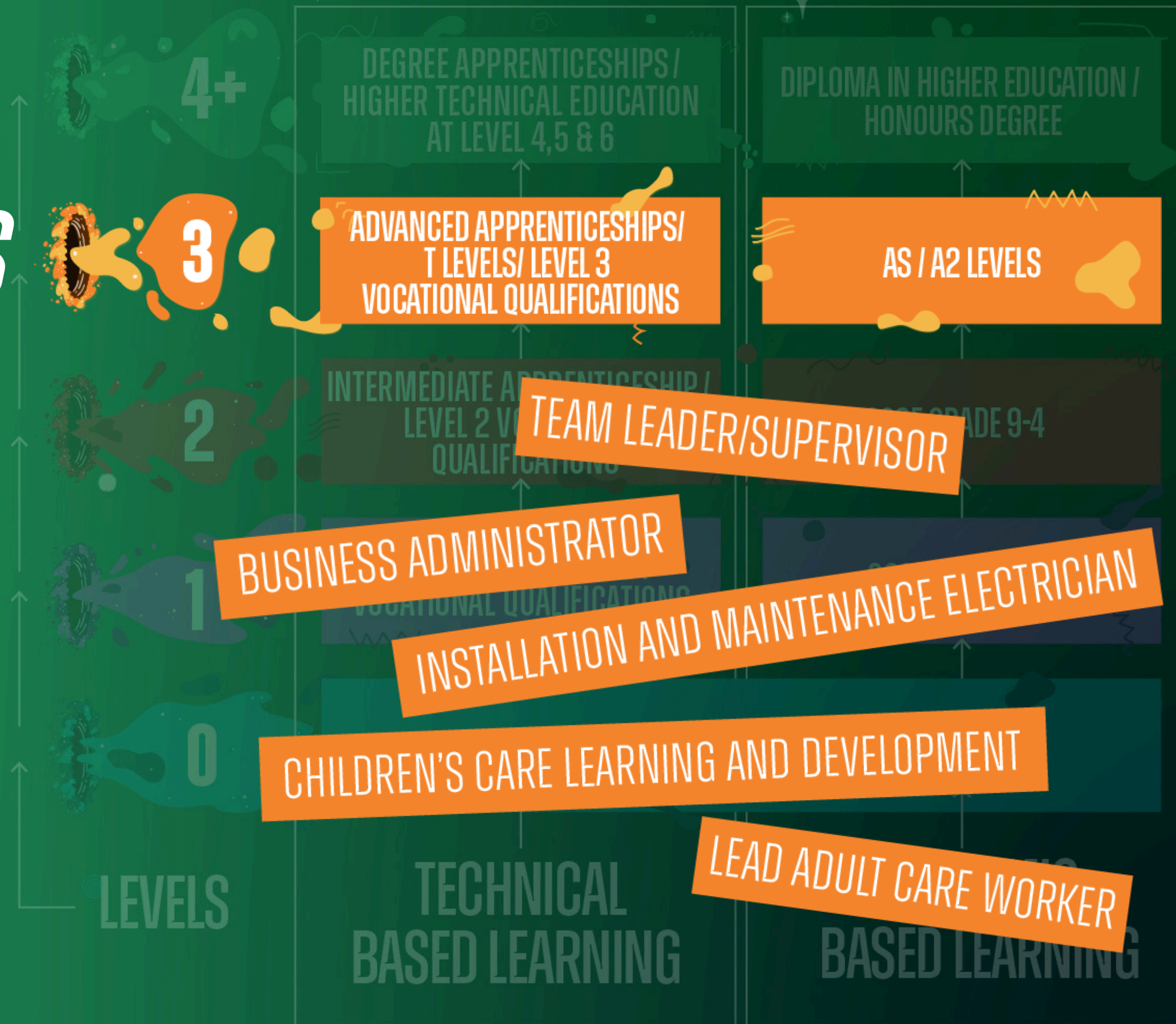
When we talk about qualification levels, it doesn't just mean Academic Learning like GCSEs, A Levels, and Degrees. There are also equivalent qualification levels in Technical Education, like Traineeships, T-Levels and Apprenticeships.



WHAT KIND OF APPRENTICESHIPS DO PEOPLE DO AT LEVEL 2?



WHAT KIND OF APPRENTICESHIPS DO PEOPLE DO AT LEVEL 3?



WHAT KIND OF APPRENTICESHIPS DO PEOPLE DO AT LEVEL 4+?



APPRENTICESHIPS

IN THE LAST 4 YEARS, MORE THAN 53,000 PEOPLE STARTED APPRENTICESHIPS IN LANCASHIRE!



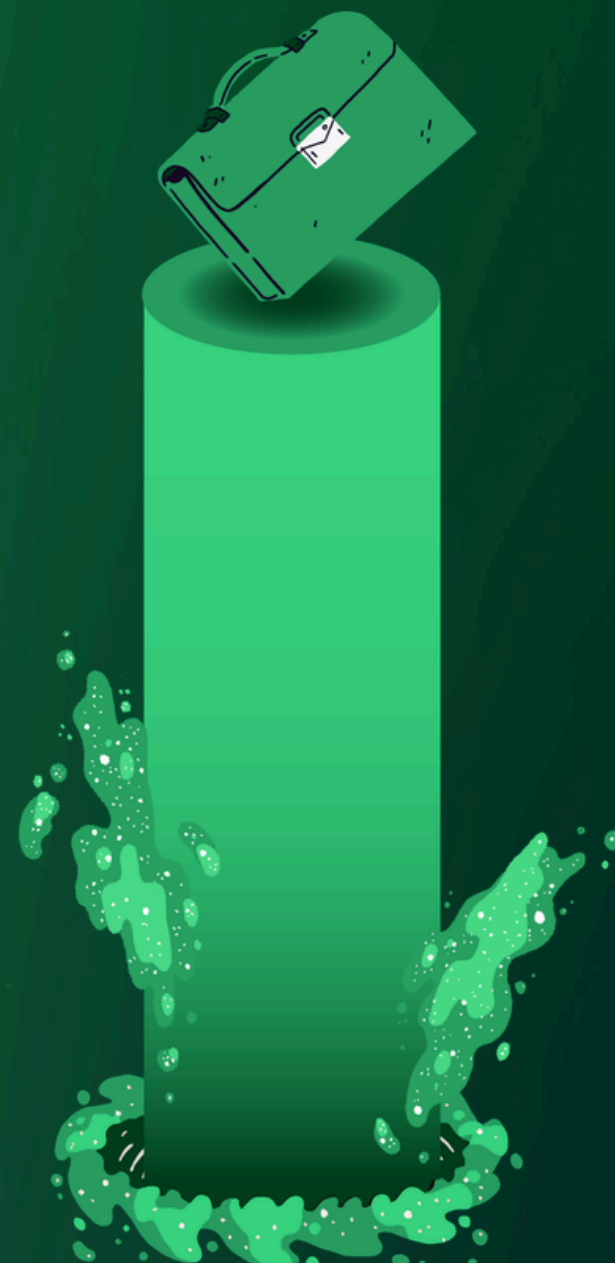
24%

LEVEL 2



32%

LEVEL 3

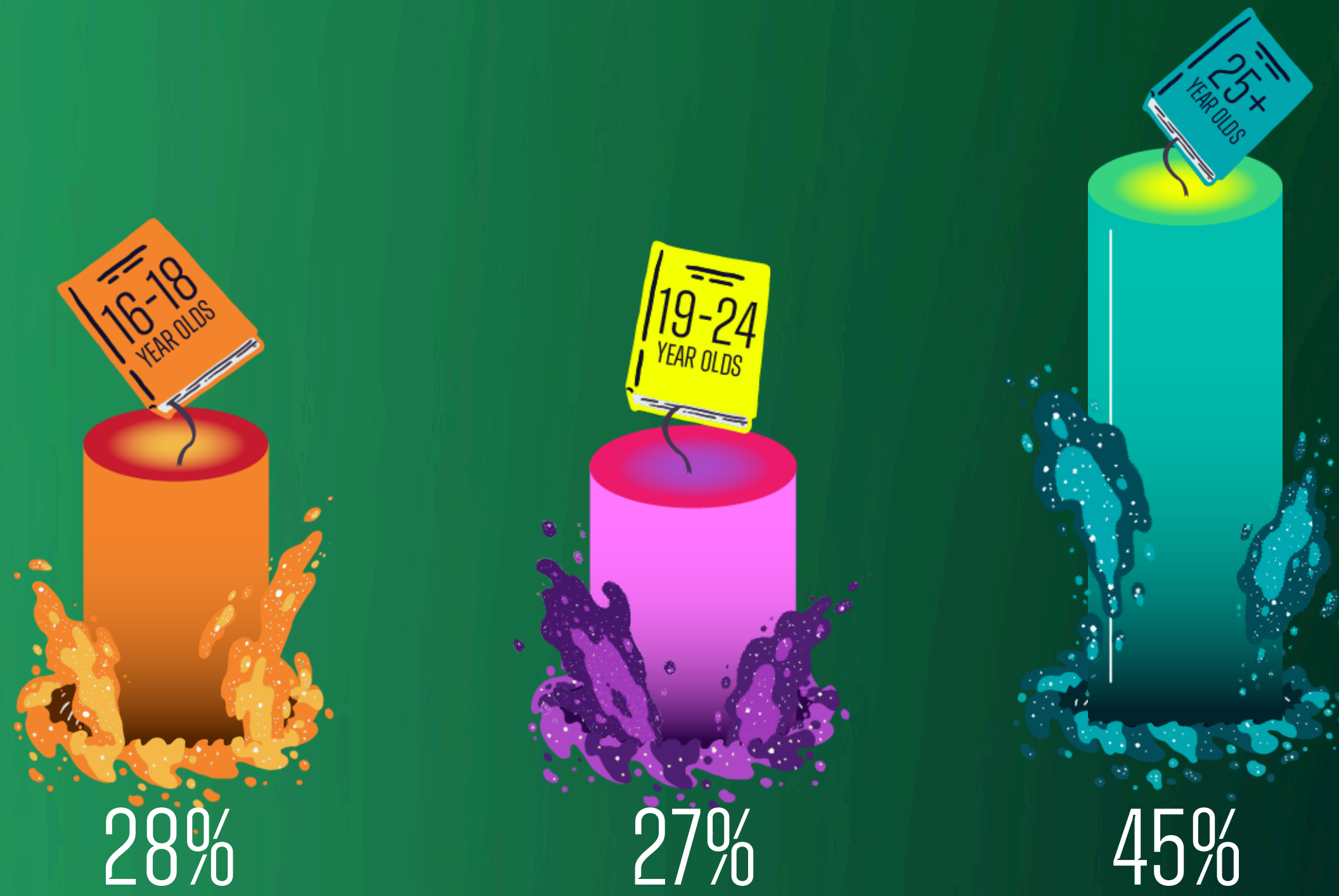


44%

LEVEL 4

APPRENTICESHIPS STARTS (%)

APPRENTICESHIPS AREN'T JUST FOR YOUNG PEOPLE, PEOPLE OF ALL AGES DO THEM!!



WHAT OTHER JOBS CAN APPRENTICES DO?

ENGINEERING

FURNITURE MANUFACTURER

CARPENTRY AND JOINERY

CHARTERED SURVEYOR

PROJECT MANAGER

CHEF

HOSPITALITY

DIGITAL MARKETER

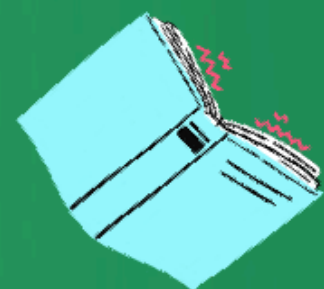
PLUMBER

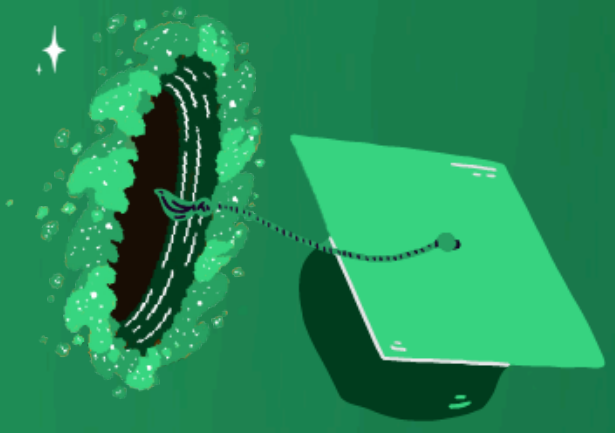
AEROSPACE ENGINEER

HEALTH AND SOCIAL CARE

DENTAL NURSE

*ITS ALL ABOUT DOING THE
RIGHT QUALIFICATIONS
FOR THE RIGHT JOBS
THAT ARE IN DEMAND IN THE
AREA YOU WANT TO WORK IN...*





WARNING!!!

It is not as simple as "get as many, and as high level qualifications as possible and you will get a job and earn more"



EMPLOYMENT RATES BY QUALIFICATION LEVEL

HOW LIKELY ARE YOU TO BE EMPLOYED? THAT COULD DEPEND ON YOUR QUALIFICATIONS

NO QUALIFICATIONS



BELOW LEVEL 2



LEVEL 2



LEVEL 3



LEVEL 4+



*THE BETTER THE QUALIFICATIONS,
THE MORE YOU COULD
POTENTIALLY EARN*



NO
QUALIFICATIONS



LEVEL 2



LEVEL 3



LEVEL
4 AND 5



LEVEL 6+

HOW TO USE YOUR PERSONAL SKILLS TO BECOME EMPLOYABLE

POSITIVE ATTITUDE

ENTHUSIASM

INTEREST

WORK ETHIC

PROBLEM SOLVING

COMMUNICATION

TIME MANAGEMENT

ORGANISATION

GREAT JOB

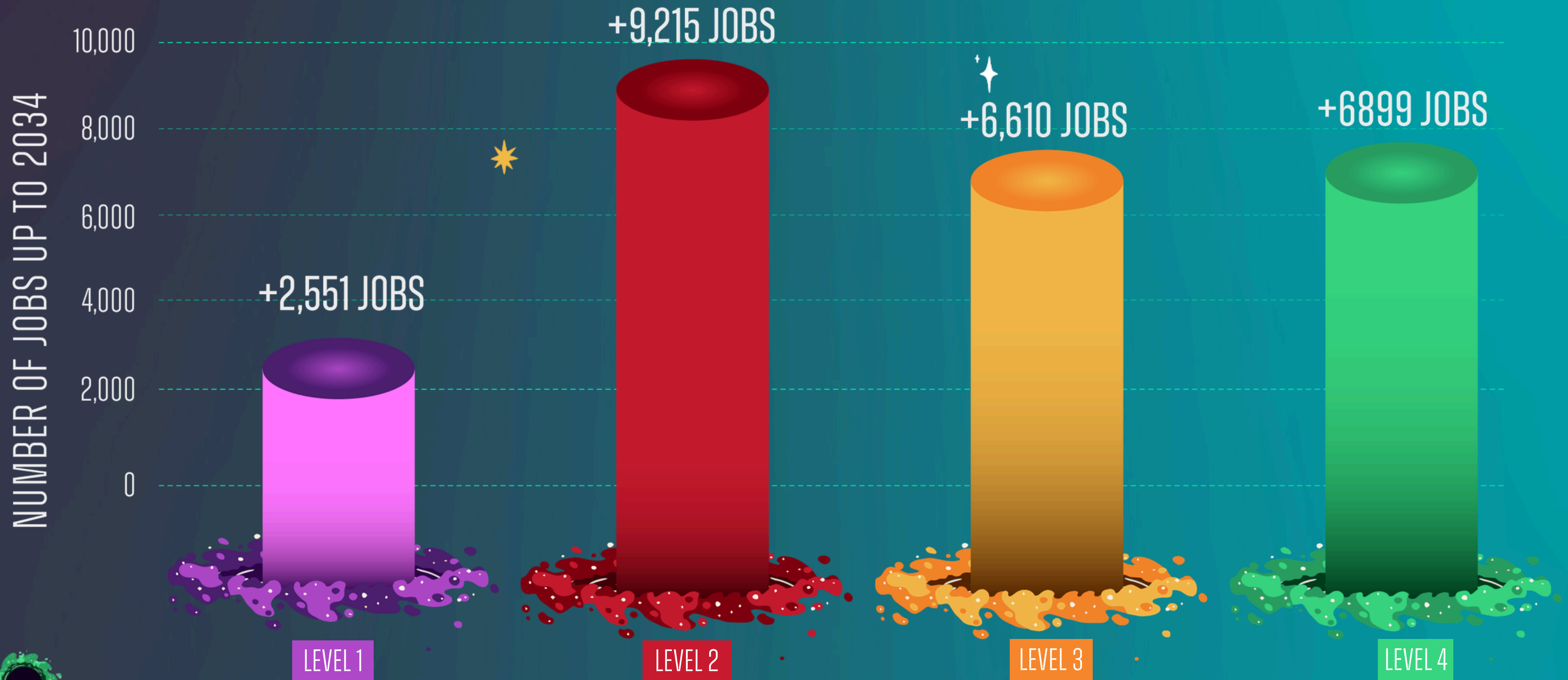
FUTURE SKILLS & JOBS

Looking forward over the next 10 to 15 years, we can see a shift in the level of qualifications employers are demanding



FUTURE SKILLS & JOBS

Jobs vs qualifications up to 2034



FUTURE SKILLS & JOBS

Jobs vs qualifications up to 2034

NUMBER OF JOBS UP TO 2034

+2,551 JOBS

CLEANERS & DOMESTICS

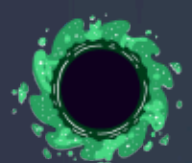
WAREHOUSE OPERATIVES

KITCHEN & CATERING

SECURITY GUARDS

Main occupations growing are:

LEVEL 1



FUTURE SKILLS & JOBS

Jobs vs qualifications up to 2034



FUTURE SKILLS & JOBS

Jobs vs qualifications up to 2034

NUMBER OF JOBS UP TO 2034

+6,610 JOBS



ELECTRICIANS



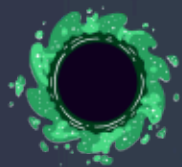
SALES MANAGERS



ADVERTISING & MARKETING

Main occupations growing are:

LEVEL 3



FUTURE SKILLS & JOBS

Jobs vs qualifications up to 2034



**FUTURE
EXCITING
OPPORTUNITIES**



NATIONAL CYBER FORCE

COMING TO LANCASHIRE

2000 JOBS

WILL BE CREATED
IN LANCASHIRE'S
NATIONAL CYBER FORCE HQ
BY 2030

YOU COULD BE
WORKING ON TOP
SECRET MISSIONS TO
PROTECT THE NATION

CALLING ALL GAMERS,
INFLUENCERS, HACKERS
& SOCIAL MEDIA EXPERTS -
THERE IS A JOB FOR YOU

WORKING WITH THE
BRIGHTEST MINDS TO MAKE
THE INTERNET SAFE

FUTURE EXCITING OPPORTUNITIES

EDEN PROJECT

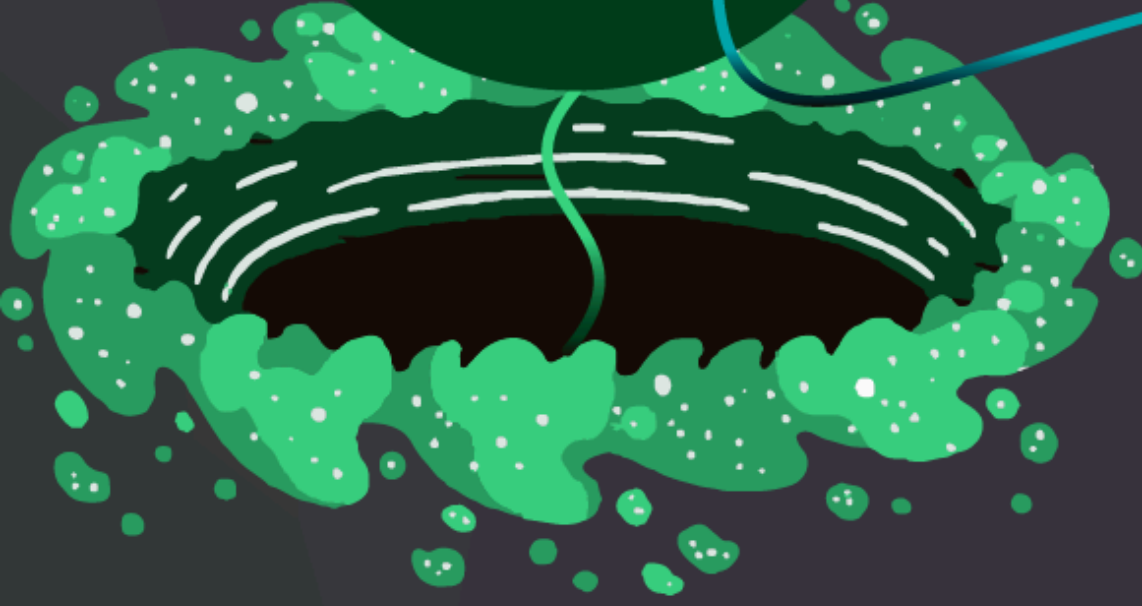
EXPECTED TO OPEN IN 2028

TOURISM
750 JOBS

THE EDEN PROJECT IS EXPECTED TO BRING 2000 JOBS TO THE AREA

SUPPLY CHAIN
950 JOBS

ECOLOGY
300 JOBS



FUTURE EXCITING OPPORTUNITIES

GREEN JOBS

COMING TO LANCASHIRE



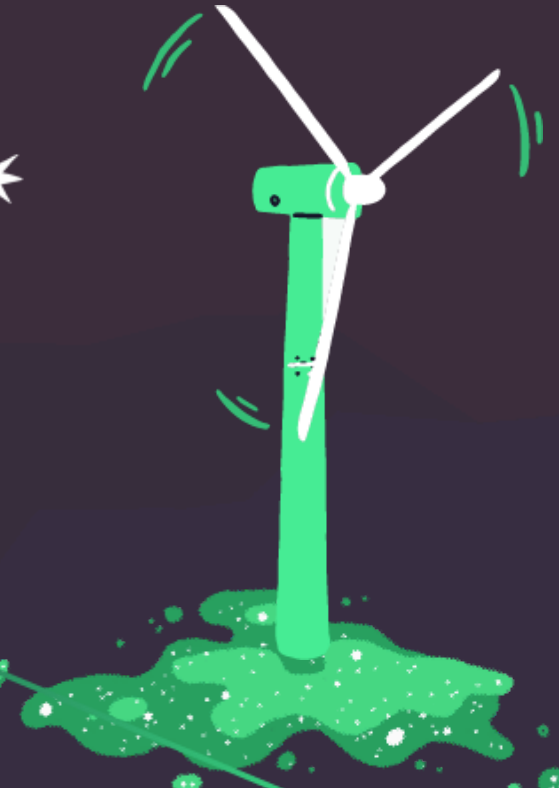
NUCLEAR



HYDROGEN
ENERGY



ELECTRIC VEHICLE
INFRASTRUCTURE



OFFSHORE WIND

The background is a dark purple space scene. It features several white stars of varying sizes, a purple and blue galaxy in the upper right, a red and black portal in the upper left, and several teal and red spiral patterns scattered throughout. The word 'PORTAL' is centered in a large, white, italicized font. The letter 'O' is replaced by a teal portal with a white wave-like shape inside.

PORTAL

WORLDS OF OPPORTUNITY - ALL IN LANCASHIRE